

# CASPAR

*Retractor System  
for cervical and lumbar spine*



*Usage and fields of application:*

**CERVICAL and MICRO LUMBAR DISCECTOMY SURGERY**



*Non-slip-fenestrated speculas  
for secure fit in muscles (p. 4)*

## CASPAR RETRACTOR SYSTEM

### Index

#### *LUMBAR SPINE INSTRUMENTS*

Counter Retractor & Blades	4
Lumbar Speculum	4

#### *SIDELOADING RETRACTORS & BLADES*

Retractors	5
Blades	6-7
Blade Inserter	7

#### *SUPPLIES*

Vertebral Distractor	8
Drill Guide	8
Bone Graft Holder and Impactor	9
Distraction Screw	9
Screw Driver	9
Tappet-Fusion Bone Tamp	9
Twist Drill	9

#### *CERVICAL RETRACTORS & BLADES*

Retractors	10-11
Blades	12-14
Peek Handle (Hand Held) Retractor	12
Blade Changing Forceps	14

#### *LUMBAR RETRACTORS & BLADES*

Hemi-Laminectomy Retractor and Blades	15
---------------------------------------	----

#### *RETRACTOR SETS WITH BLADES*

RS 3010SET Cervical Rack Retractor + 10 Blades	16
RS 4010SET Cervical Ring Retractor + 5 Blades	17
RS 7455SET Laminectomy / Hemi-Laminectomy Set	18



Lumbar Speculum  
fenestrated, blackened

length/ depth	Standard Speculum	Speculum with Light Source Carrier*
40mm	RS 6425-040	
45mm	RS 6425-045	
50mm	RS 6425-050	
55mm	RS 6425-055	
60mm	RS 6425-060	
65mm	RS 6425-065	
70mm	RS 6425-070	RS 6436LT
75mm	RS 6425-075	RS 6432LT
80mm	RS 6425-080	RS 6435LT
85mm	RS 6425-085	RS 6433LT
100mm	RS 6425-100	

\* Available upon request



Counter Retractor Frame  
Stainless Steel, blackened  
RS 4610 - max. spread ~ 45mm  
RS 4610-160 - max. spread ~ 90mm

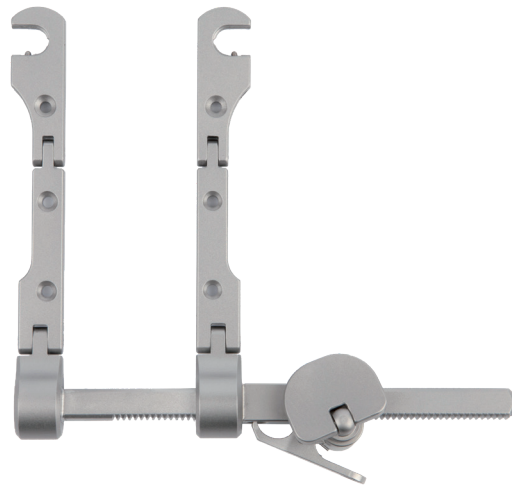


Lateral Blade for Counter Retractor      Paraspinal Blade for Counter Retractor

Counter Retractor Blades <i>Stainless Steel, blackened</i>		
blade length/ depth	Lateral Blade	Paraspinal Blade
35mm	RS 3480	RS 3479
40mm	RS 3482	RS 3483
45mm	RS 3484	RS 3485
50mm	RS 3486	RS 3487
55mm	RS 3488	RS 3489
60mm	RS 3490	RS 3491
65mm	RS 3492	RS 3493
70mm	RS 3497	RS 3495
75mm	RS 3494	RS 3481
80mm	RS 3499	-
85mm	RS 3496	-
100mm	RS 3498	-



**Ring Handle Retractor**  
Stainless Steel Frame  
RS 4802-SL - max. spread ~ 87mm



**Rack Retractor**  
Stainless Steel Frame  
RS 4800-SL - max. spread ~ 76mm



**V-Handle Retractor**  
**(simple style)**  
Stainless Steel Frame  
RS 4808-SL - max. spread ~ 79mm

# Sideloading Titanium Blades (fenstered)



MEDIAL		
blade length/ depth	Medial 19mm	Medial 24mm
25mm	RS 4850-TI	
30mm	RS 4851-TI	RS 4870-TI
35mm	RS 4852-TI	RS 4871-TI
40mm	RS 4853-TI	RS 4872-TI
45mm	RS 4854-TI	RS 4873-TI
50mm	RS 4855-TI	RS 4874-TI
55mm	RS 4856-TI	RS 4875-TI
60mm	RS 4857-TI	RS 4876-TI
65mm	—	RS 4877-TI
70mm	—	RS 4878-TI
75mm	—	—

LATERAL		
blade length/ depth	Lateral 19mm*	Lateral 24mm
25mm		
30mm	RS 4859-030-TI	RS 4880-TI
35mm	RS 4859-035-TI	RS 4881-TI
40mm	RS 4859-040-TI	RS 4882-TI
45mm	RS 4859-045-TI	RS 4883-TI
50mm	RS 4859-050-TI	RS 4884-TI
55mm	RS 4859-055-TI	RS 4885-TI
60mm	RS 4859-060-TI	RS 4886-TI
65mm		RS 4887-TI
70mm		RS 4888-TI
75mm		

Sideloading Blades are available only from Titanium material.

\* Available upon request



BLUNT		
blade length/ depth	Blunt <i>19mm</i>	Blunt <i>24mm</i>
25mm	RS 4860-TI	
30mm	RS 4861-TI	
35mm	RS 4862-TI	RS 4891-TI
40mm	RS 4863-TI	RS 4892-TI
45mm	RS 4864-TI	RS 4893-TI
50mm	RS 4865-TI	RS 4894-TI
55mm	RS 4866-TI	RS 4895-TI
60mm	RS 4867-TI	RS 4896-TI
65mm	RS 4868-TI	RS 4897-TI
70mm		RS 4898-TI
75mm		RS 4899-TI



**Blade Inserter**  
for Sideloaded Blades, 2 recommended  
RK 3873



**Vertebral Distractor left**  
RS 4621 - max. spread ~ 60mm  
RS 4623 - max. spread ~ 80mm



**Vertebral Distractor right**  
RS 4631 - max. spread ~ 60mm  
RS 4633 - max. spread ~ 80mm

*Vertebral body distractor for use in surgical procedures from the right and from the left approach.  
Elongated version is used for multilevel (more than 2) distraction.*



**Drill Guide left**  
RS 4627K



**Drill Guide right**  
RS 4637K

*For parallel positioning of the distraction screws.*





Screw Driver

RK 6010K	200mm		<i>Screw driver for distraction screws</i>
----------	-------	--	--



Tappet-Fusion Bone Tamp

RK 6020K	200mm 8"	Ø 3mm	<i>Tapper for the fine positioning of the graft and for cancellous bone plasty</i>
RK 6021K		Ø 5mm	
RK 6022K		Ø 8mm	



Bone Graft Holder and Impactor

RK 6024K	218mm 8,25"	6x15mm	
RK 6025K		6x12mm	



Twist Drill

RK 6012	133mm	Ø 1,7mm	<i>for pre-boring holes for distraction screws</i>
---------	-------	---------	--



Distraction Screw

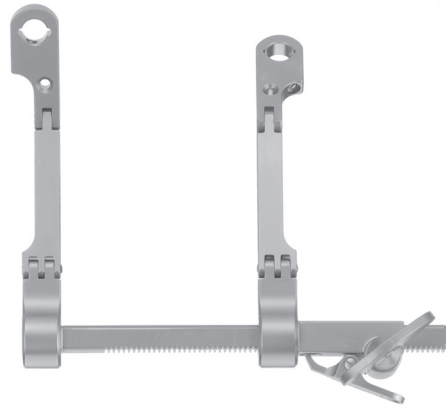
RK 6007	66mm	12mm tip	<i>to be used with vertebral distractors (p. 8)</i>
RK 6014	68mm	14mm tip	
RK 6016	70mm	16mm tip	
RK 6018	72mm	18mm tip	

Transverse Retraction (left and right)



**Rack Retractor**  
single hinge  
RS 3010 - max. spread ~ 77mm  
RS 30102 -max. spread ~ 123mm

**Titanium Rack Retractor**  
single hinge  
RS 3010-TI - max. spread ~ 77mm spread



**Rack Retractor**  
double hinge  
RS 4620 - max. spread ~ 77mm

**Titanium Rack Retractor**  
double hinge  
RS 4620-TI - max. spread ~ 77mm spread

Longitudinal Retraction (up and down)



**V-Handle Retractor**  
single hinge  
RS 4612 - max. spread ~ 76mm



**Ring Handle Retractor**  
single hinge  
RS 4010 - max. spread ~ 89mm



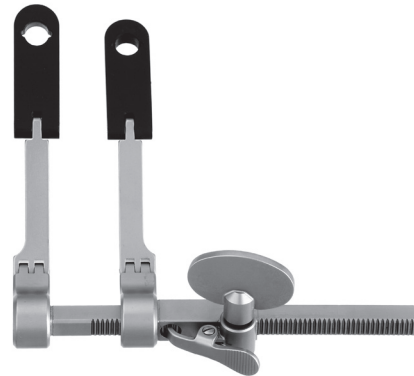
**Ring Handle Retractor**  
double hinge  
RS 4011 - max. spread ~ 96mm

**Titanium Ring Handle Retractor**  
single hinge  
RS 4010-TI - max. spread ~ 76mm spread

Transverse Retraction (left and right)



**Peek Retractor**  
 stainless steel with Peek arms  
 single hinge  
 RS 3012 - max. spread ~ 70mm  
 RS 3013 - max. spread ~ 142m



**Peek Retractor**  
 stainless steel frame with Peek arms  
 double hinge  
 RS 4622 - max. spread ~ 70mm  
 RS 46220 - max. spread ~ 142mm

Longitudinal Retraction (up and down)



**V-Handle Retractor**  
 stainless steel with Peek arms  
 single hinge  
 RS 4612-P - max. spread ~ 71mm



**Peek Ring Handle Retractor**  
 stainless steel with Peek arms  
 single hinge  
 RS 4012 - max. spread ~ 87mm



**Peek Ring Handle Retractor**  
 stainless steel with Peek arms  
 double hinge  
 RS 4013 - max. spread ~ 96mm



MEDIAL BLADES				
blade length/ depth	Stainless Steel <i>23mm</i>	Peek <i>23mm</i>	Titanium <i>20mm</i>	Titanium <i>20mm fenestrated</i>
25mm				RS 3226-TI
30mm				RS 3231-TI
35mm	RS 3235			RS 3236-TI
40mm	RS 3240	RS 9000P	RS 3240-TI	RS 3241-TI
45mm	RS 3245	RS 9001P	RS 3245-TI	RS 3246-TI
50mm	RS 3250	RS 9002P	RS 3250-TI	RS 3251-TI
55mm	RS 3255	RS 9003P	RS 3255-TI	RS 3256-TI
60mm	RS 3260	RS 9004P	RS 3260-TI	RS 3261-TI
65mm	RS 3265	RS 9005P	RS 3265-TI	RS 3266-TI
70mm	RS 3270		RS 3270-TI	RS 3271-TI
75mm	RS 3240-075	RS 9007P	RS 3275-TI	
80mm	RS 3240-080			
85mm	RS 3240-085			
90mm	RS 3240-090			
95mm	RS 3240-095			
100mm	RS 3240-100			

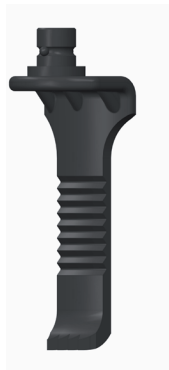


**Peek Handle**  
RS 3449 - can be used as (Hand Held) Retractor for blades



LATERAL BLADES				
blade length/ depth	Stainless Steel <i>23mm</i>	Peek <i>23mm</i>	Titanium <i>20mm</i>	Titanium <i>20mm fenestrated</i>
25mm			RS 3425-TI	RS 3426-TI
30mm			RS 3430-TI	RS 3431-TI
35mm			RS 3435-TI	RS 3436-TI
40mm	RS 3440	RS 3441P	RS 3440-TI	RS 3441-TI
45mm	RS 3445	RS 3446P	RS 3445-TI	RS 3446-TI
50mm	RS 3450	RS 3451P	RS 3450-TI	RS 3451-TI
55mm	RS 3455	RS 3456P	RS 3455-TI	RS 3456-TI
60mm	RS 3460	RS 3461P	RS 3460-TI	RS 3461-TI
65mm	RS 3465	RS 3466P	RS 3465-TI	RS 3466-TI
70mm	RS 3471		RS 3470-TI	RS 3471-TI
75mm		RS 3469P	RS 3475-TI	

*as pictured above,  
but reduced width*



EXTRA THIN LATERAL BLADES		
blade length/ depth	Stainless Steel <i>15mm</i>	Peek <i>12mm</i>
40mm	RS 3470	RS 3444-040P
45mm	RS 3472	RS 3444-045P
50mm	RS 3474	RS 3444-050P
55mm	RS 3476	RS 3444-055P
60mm	RS 3478	RS 3444-060P



BLUNT BLADES				
blade length/depth	Stainless Steel <i>23mm</i>	Peek <i>23mm</i>	Titanium <i>20mm</i>	Titanium <i>20mm fenestrated</i>
30mm			RS 4230-TI	
35mm	RS 4235		RS 4235-TI	RS 4236-TI
40mm	RS 4240	RS 4241P	RS 4240-TI	RS 4241-TI
45mm	RS 4245	RS 4246P	RS 4245-TI	RS 4246-TI
50mm	RS 4250	RS 4251P	RS 4250-TI	RS 4251-TI
55mm	RS 4255	RS 4256P	RS 4255-TI	RS 4256-TI
60mm	RS 4260	RS 4261P	RS 4260-TI	RS 4261-TI
65mm	RS 4265	RS 4266P	RS 4265-TI	RS 4266-TI
70mm	RS 4270		RS 4270-TI	RS 4271-TI
75mm	RS 4275	RS 4269P	RS 4275-TI	RS 4276-TI



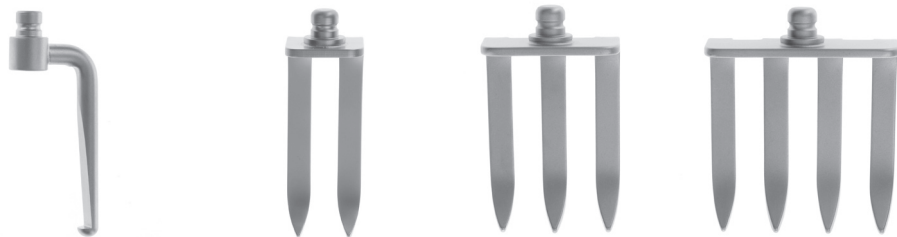
Blade Changing Forceps  
RS 4711 - 115mm  
Blade ejector, for changing the blades

# Lumbar Retractor & Blades

## Caspar Laminectomy / Hemi-Laminectomy



**Laminectomy Rack Retractor**  
 stainless steel  
 single hinge  
 RS 7455 - max. spread ~ 170mm



Caspar Hook Blades				
blade length/ depth	Hook	2 teeth 22mm	3 teeth 37mm	4 teeth 52mm
32mm		RS 7462	RS 7470	RS 7478
37mm	RS 7460	RS 7463	RS 7471	RS 7479
42mm		RS 7464	RS 7472	RS 7480
47mm		RS 7465	RS 7473	RS 7481
52mm		RS 7466	RS 7474	RS 7482
57mm	RS 7461	RS 7467	RS 7475	RS 7483
62mm		RS 7468	RS 7476	RS 7484
67mm		RS 7469	RS 7477	RS 7485
75mm			RS 7488	RS 7489
85mm		RS 7486	RS 7487	
90mm	RS 7459			



RS 3010SET - Rack Retractor + 5 Medial Blades + 5 Lateral Blades

RS 3010SET Retractor incl. 10 Blades		
units	art.no.	Description
1	RS 3010	Rack Retractor, single hinge max. spread ~ 77mm
1	RS 3240	Medial Blade 23x 40mm
1	RS 3245	Medial Blade 23x 45mm
1	RS 3250	Medial Blade 23x 50mm
1	RS 3255	Medial Blade 23x 55mm
1	RS 3260	Medial Blade 23x 60mm
1	RS 3440	Lateral Blade 23x 40mm
1	RS 3445	Lateral Blade 23x 45mm
1	RS 3450	Lateral Blade 23x 50mm
1	RS 3455	Lateral Blade 23x 55mm
1	RS 3460	Lateral Blade 23x 60mm

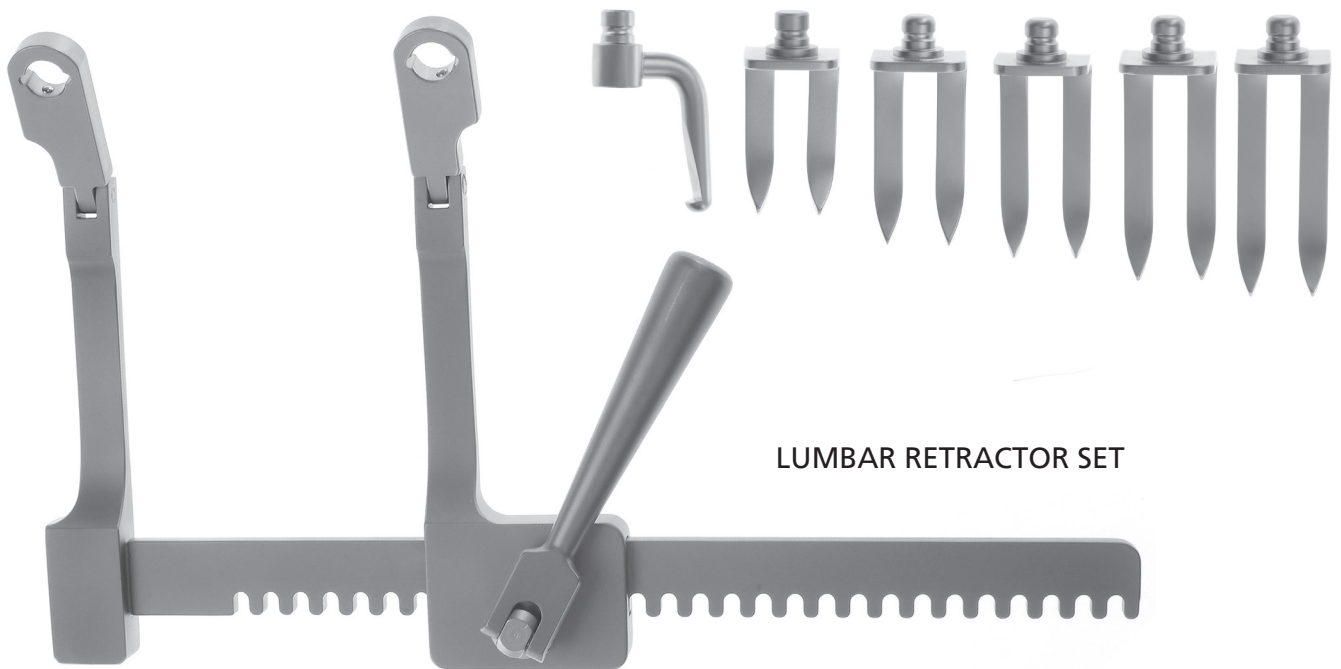




CERVICAL RETRACTOR SET

RS 4010SET - Ring Handle Retractor + 5 Blunt Blades

RS 4010SET Retractor incl. 5 Blades		
units	art.no.	Description
1	RS 4010	Ring Handle Retractor, single hinge max. spread ~ 89mm
1	RS 4245	Blunt Blade 23x 45mm
1	RS 4250	Blunt Blade 23x 50mm
1	RS 4255	Blunt Blade 23x 55mm
1	RS 4260	Blunt Blade 23x 60mm
1	RS 4265	Blunt Blade 23x 65mm



RS 7455 Set - Rack Retractor + 6 Hook Blades

RS 7455SET Retractor Set incl. 6 Blades		
units	art.no.	Description
1	RS 7455	Rack Retractor, single hinge, max. spread ~ 170mm
1	RS 7460	Hook 37mm
1	RS 7463	Blade 22x 37mm
1	RS 7464	Blade 22x 42mm
1	RS 7465	Blade 22x 47mm
1	RS 7466	Blade 22x 52mm
1	RS 7467	Blade 22x 35mm

**Fully adapted system** and instrumentation for  
*Cervical Spine Operation and  
Lumbar Procedure.*

